

Attachments

RFP 21-013 City of Commerce Fire Station 2



FRONT VIEW



LEFT SIDE VIEW



REAR VIEW



RIGHT SIDE VIEW

RPF 21-003

Installation Instructions

COMPOSITION & MATERIALS

Huber Engineered Woods (HEW) is committed to the responsible use of natural resources. AdvanTech® panels are produced from young, fast-growing trees for less waste and faster availability. All parts of the log are used during production. Leftover chips, bark and sawdust are used as fuel to reduce energy use during manufacturing.

CERTIFICATION & CODE COMPLIANCE

The International Code Council (ICC) Evaluation Service (ES) provides technical evaluations of building products for manufacturers that want to validate and qualify their products as having superior design properties. For years, HEW has maintained an ICC-ES report for its engineered wood subfloor, AdvanTech flooring, to elevate it from other subfloors that only meet the PS-2 industry standard. The result? AdvanTech flooring was issued the Evaluation Service Report, ESR-1785, certifying that it has endured a battery of testing protocols that measure and ensure greater and consistent levels of panel strength, stiffness and fastener holding power.¹ For additional information, go to AdvanTechPerforms.com.

AdvanTech flooring and sheathing panels, certified to be in conformance with requirements for U.S. Department of Housing and Urban Development (HUD-FHA) Use of Materials Bulletin #40C, bear the designation HUD-UM-40C within the stamp.

FLAME SPREAD

AdvanTech flooring and sheathing panels are recognized as having a Class C (III) flame spread rating without need for test or label by HUD/FHA Manual of Acceptance Practices, Section 405-8 to the Minimum Property Standards.

STORAGE

- Ship panels under tarp.
- Set bundles on three supports to keep off the ground.
- Outdoors, cover panels loosely with waterproof protective material.
- Anchor covers on the top of the stack, but keep away from sides and bottom for good air circulation.
- When high moisture exists, cut banding on the stack to prevent edge damage.

HANDLING

- Avoid dropping panels on corners or edges.
- When using a forklift, put the stack on a pallet or supports to minimize damage from forks.

General Information

Square Edge Panel Size: 4' x 8'

Tongue & Groove Panel Size: 4' x 8' (Actual face dimensions for tongue & groove panel are approximately 47-1/2" x 95-7/8")

Edge: Tongue & groove

Custom: Specialty sanding and cut sized are available on request. Inquiries will be handled on an individual basis.

Flooring Mill Specifications

Mill	Panel Thickness (in)	Approx.* Weight Per Panel	Panels Per Unit
Easton, ME	19/32	61 lbs.	55 pcs.
	23/32	72 lbs.	45 pcs.
Commerce, GA	19/32	68 lbs.	55 pcs.
	23/32	78 lbs.	45 pcs.
	7/8	94 lbs.	40 pcs.
Crystal Hill, VA	19/32	68 lbs.	55 pcs.
	23/32	78 lbs.	45 pcs.
	7/8	94 lbs.	40 pcs.
	1	110 lbs.	35 pcs.
Broken Bow, OK	1 1/8	124 lbs.	30 pcs.
	19/32	68 lbs.	55 pcs.
	23/32	85 lbs.	45 pcs.
	7/8	100 lbs.	40 pcs.
Broken Bow, OK	1	108 lbs.	35 pcs.
	1 1/8	126 lbs.	30 pcs.

* Estimated panel weight. Actual weight may vary by mill.

EXPOSURE

AdvanTech panels should not be used in applications that will expose the panels to weather permanently. AdvanTech panels are not approved or certified for exterior exposure. Classified as Exposure 1 under PS-2, AdvanTech panels are intended to resist the effects of moisture due to construction delays or other conditions of similar severity, but are not suitable for permanent exposure.

INSTALLATION RECOMMENDATIONS

ATTENTION: This installation guide is intended to provide general information for the designer and end user. The following guidelines will help you safely and properly install the AdvanTech® flooring. We urge you, and anyone installing this product, to read these guidelines to minimize any risk of safety hazards and prevent voiding any applicable warranties. This manual is a general installation guide and does not cover every installation condition. Proper installation shall be deemed to mean the most restrictive requirement specified by Huber Engineered Woods (HEW), local building code, engineer or architect of record, or other authority having jurisdiction. You are fully and solely responsible for all safety requirements and code compliance. For additional information, contact HEW.

STEP ONE: FOCUS ON SAFETY

Make sure the floor framing system is properly fastened to the supporting walls, beams, girders or other supports and is properly braced against rollover during floor panel installation. See floor joist or truss manufacturer installation instructions for additional information. Follow all OSHA regulations and any other safety guidelines and safety practices during installation and construction.

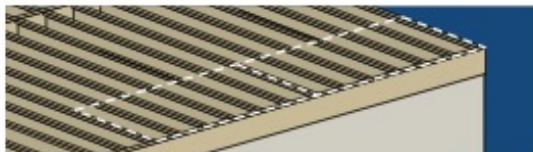
STEP TWO: GLUE PANELS

HEW recommends using polyurethane or solvent-based subfloor adhesives that conform to industry standard APA AFG-01 or ASTM D 3498, and follow manufacturer's recommendations when installing AdvanTech flooring. Recommended adhesives structurally bond the panel to the joist for a stronger, stiffer installation than panels installed with fasteners alone. Panels should span two or more floor joists with the long dimension perpendicular to the floor framing.

Apply a 1/4-inch bead of adhesive to the top of the floor joists. The adhesive fills minor framing irregularities and provides a tight, even bond that helps prevent squeaks.



Apply two lines of adhesive to joists where panel ends meet.



Apply only enough adhesive to lay one or two panels at a time to keep the adhesive from curing or skinning.

If a "skin" forms on the glue, remove it and reapply to avoid customer complaints and costly callbacks.

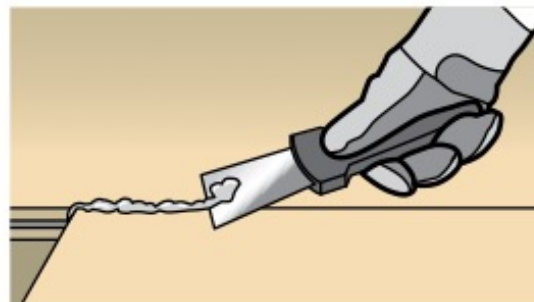


Immediately after applying the adhesive, lower the first panel into place, making sure the panel is square on the joists and the certification stamp is face down for easy viewing by local building officials.

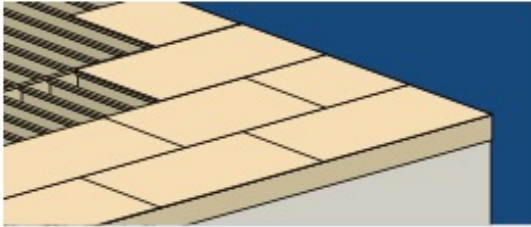
Do not install floor panels at temperatures below 20°F (-7°C) or above 100°F (38°C). Adhesive performance could be affected outside of these ranges, causing squeaks or other problems. Adhesive should come to room temperature before use. Store adhesives as directed by adhesive manufacturer.

STEP THREE: JOINING & SPACING

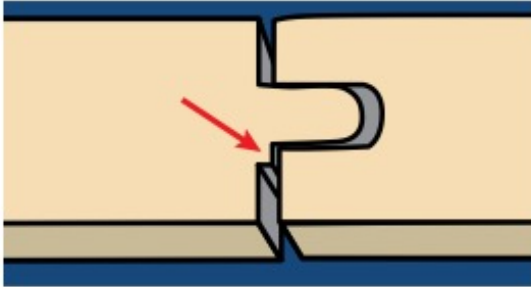
Some installers choose to run a 1/8-inch bead of adhesive in the groove. Using too much will cause squeeze-out. The practice of gluing the tongue & groove (T&G) edge is at the builder's discretion and does not affect any AdvanTech flooring warranties.



Scrape up "squeeze-out" immediately. This saves you costly dried glue cleanup and possible delays for your finished floor installer who needs a smooth surface.



Stagger end joints of adjacent panel runs.

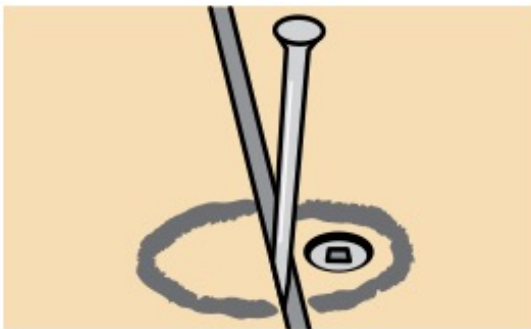


T&G edges are designed to self-space.



DO NOT use a sledge hammer to beat panels together!

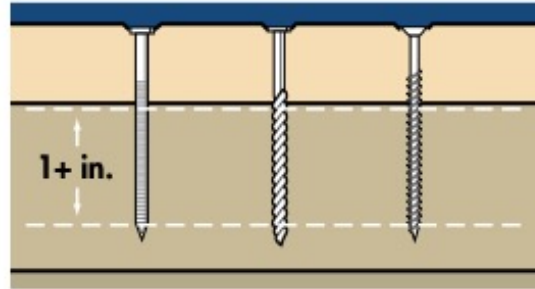
Snug the T&G edges together using wood blocks and a framing hammer. Avoid excessive force that can damage the tongue or groove. (Damaged tongues or grooves can give the appearance of edge swell and may require costly sanding and blocking.)



For the next panel and all additional panels, space 4-foot panel ends and other cut edges with a recommended 1/8-inch gap – 8d nails make good spacers.

STEP FOUR: FASTEN THE PANEL

Install ALL required fasteners (edges and intermediate) prior to adhesive skinning or curing. DO NOT sequence fastener installations starting at corners followed by a later stage installation at edges and intermediate locations. ALL fasteners must be installed while subfloor adhesive is still fresh.



Code-approved fasteners must penetrate framing members at least one inch.

- For panels up to 3/4-inch thick, use 8d ring shank nails, screw shank nails or #8 wood screws.
- For panels greater than 3/4-inch thick, use 10d ring shank nails, screw shank nails or #9 wood screws.

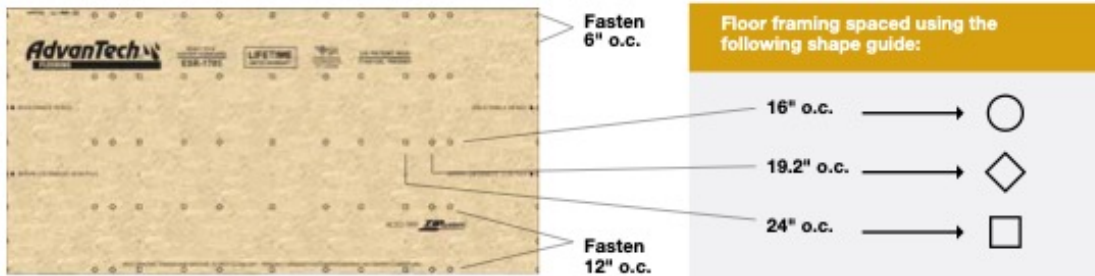


INSTALL FASTENERS:

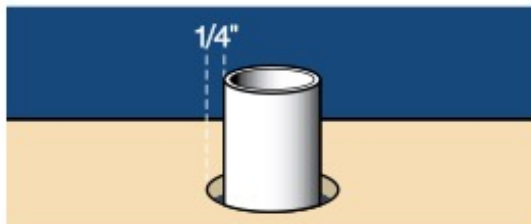
- Start at one corner.
- Work your way to the remaining edges.
- Maintain a maximum edge distance of 3/8-inch to 1/2-inch.
- Heads should slightly penetrate the panel surface.
- Maintain a maximum spacing of 6-inch o.c. on supported edges (4-foot ends).
- Maintain a maximum spacing of 12-inch o.c. at intermediate support locations.

Use AdvanTech® flooring pre-printed fastener guides for attachment to joists spaced at 16-inch o.c., 19.2-inch o.c. and 24-inch o.c.

For 1 1/8-inch panels with joists spaced greater than 24-inch o.c., space fasteners a maximum of 6-inch o.c. at edges and intermediate locations.



STEP FIVE: HOLES & CLEARANCES



Cutouts for plumbing and electrical components should be oversized by at least 1/4-inch to avoid a forced fit.

PRODUCT SERVICE CONDITIONS

Crawspace foundations shall have durable ground cover vapor barriers installed and may be vented or unvented. All foundations must be constructed in accordance with the applicable code. In addition, panels should be acclimated to end use service conditions before applying necessary finish flooring.

FINISHED FLOOR INSTALLATION

Do not use water sealers on AdvanTech® flooring. Doing so will void the warranty. AdvanTech flooring panels must be dry and clean prior to finished floor installation.

NOTE TO FINISH FLOORING INSTALLER: The dimensional stability and no-sand guarantee of AdvanTech flooring does not relieve you from the responsibility of making sure the subfloor is in suitable condition for successful installation of the particular type of finish flooring being installed. Subfloor preparation may include practices such as making sure fastener heads are properly seated flush with the panel, scraping adhesives and drywall joint compound, applying floor leveler, installing underlayment, repairing damaged subfloor or irregular framing and minor surface levelling if needed, etc.

AdvanTech flooring helps save time and money during the construction phase by minimizing or eliminating rework. Follow all finished floor manufacturer installation instructions.

References: 1. AdvanTech flooring is the only wood structural panel substantiated by third party evaluation services for published design values for strength, stiffness and fastener holding power above PS-2 minimums. Please see ESR-1785 for AdvanTech flooring published design values. 2. Limitations and restrictions apply. Visit AdvanTechPerforms.com for details.

RESIDENTIAL CARPET AND PAD: May be installed directly over AdvanTech flooring.

COMMERCIAL CARPET/VCT/VINYL: A minimum 1/4-inch plywood underlayment is required. Follow finished floor manufacturer instructions.

HARDWOOD FLOORS: Apply 15# or 30# asphalt felt paper or other synthetic underlayment between hardwoods and AdvanTech flooring. Install hardwood flooring perpendicular to the joist system and follow the recommendations of the finished flooring manufacturer and the National Wood Flooring Association (NWFA).

CERAMIC TILE: Underlayment is required per ANSI Standard A-108 with noted exception of 1 1/4-inch cement mortar application method. For best results, HEW recommends installing tile and underlayment in accordance with an approved method published by the Tile Council of North America.

GYPSUM CONCRETE UNDERLAYMENT: May be applied over AdvanTech flooring following gypsum concrete underlayment manufacturer's instructions. AdvanTech flooring's density and smooth surface can help reduce the risk of cracking caused by poor quality subfloors. Subfloors with swollen edges can create weak "thin" spots in gypsum concrete underlayment.

RADIANT HEATING: AdvanTech flooring may be used with building code approved radiant heating systems, provided these systems are properly installed and maintained per manufacturer's recommendations.

FLOOR FLATNESS: HEW considers a floor flat when the difference in height between two points does not exceed 3/16-inch in 10-feet or 1/8-inch in 6-feet. This definition is consistent with the National Wood Flooring Association's guidelines for subfloor flatness. If the finish flooring type requires substrate flatness tolerances to be more restrictive, the AdvanTech flooring surface may require minor surface levelling prior to installation of finish flooring.

Please contact Huber Engineered Woods for applications not listed above.



Visit AdvanTechPerforms.com to learn why AdvanTech flooring is the **FLAT OUT BEST™** for a quiet, stiff floor. 1.800.933.9220



© 2013 Huber Engineered Woods LLC. AdvanTech is a registered trademark and FLAT OUT BEST is a trademark of Huber Engineered Woods LLC. Huber is a registered trademark of J.M. Huber Corporation. HUB 3149 06/13



3985 Highway 106 N.
Danielsville, GA 30633
706-207-0998 telephone
706-789-3837 fax

COMMERCE
FIRE DEPT.

FIREHOUSE REMODEL

Scale 1/4"=1'-0"

Print Record

OCT. 12 2008 ORIG. ISSUE

Revisions

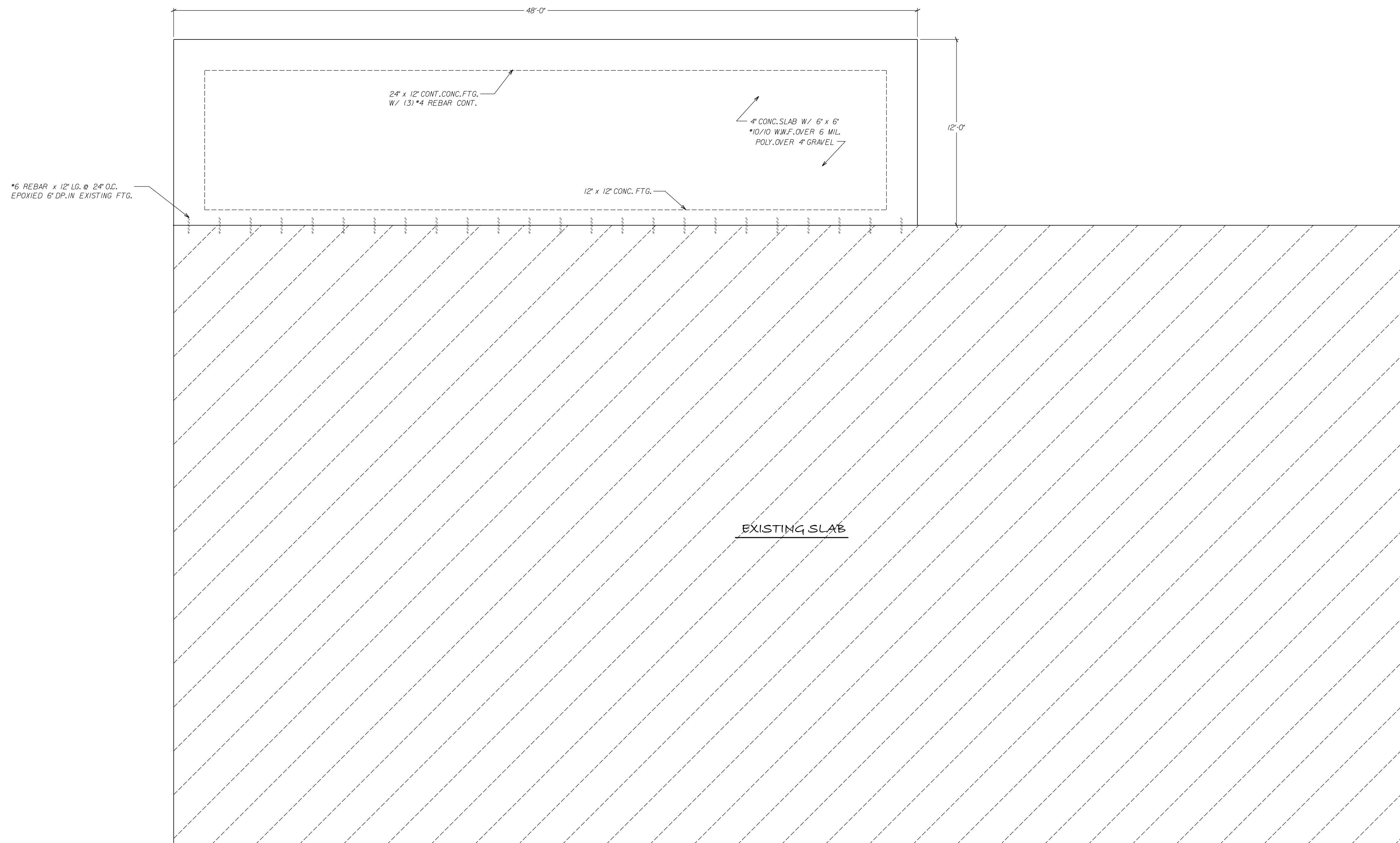
Date 12-07-20 Job No. KD101220

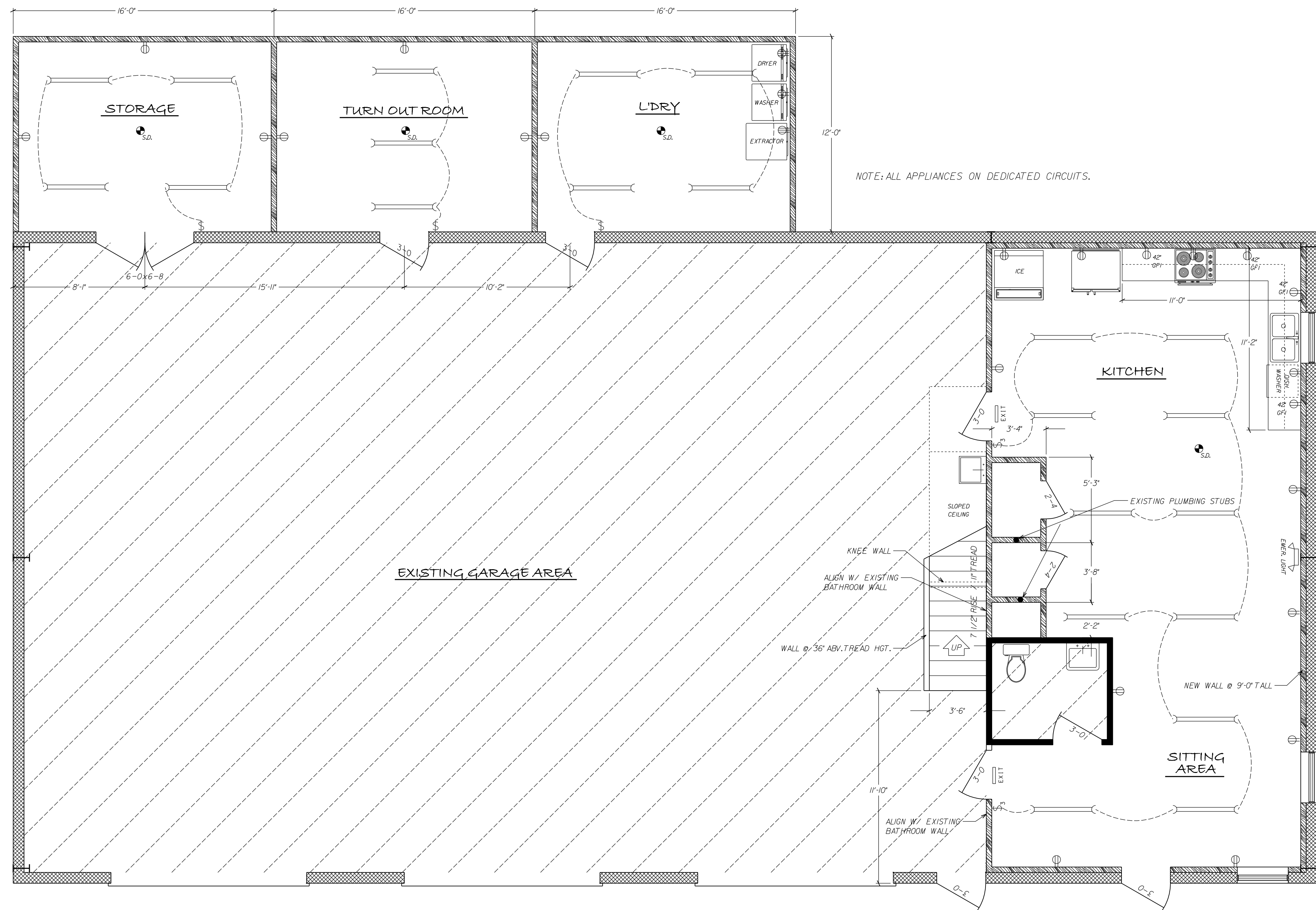
Sheet Title

SLAB EXTENSION

Sheet No.

A-1





FIREHOUSE REMODEL

Scale 1/4"=1'-0"

Print Record

OCT. 12 2008 ORIG. ISSUE

Revisions

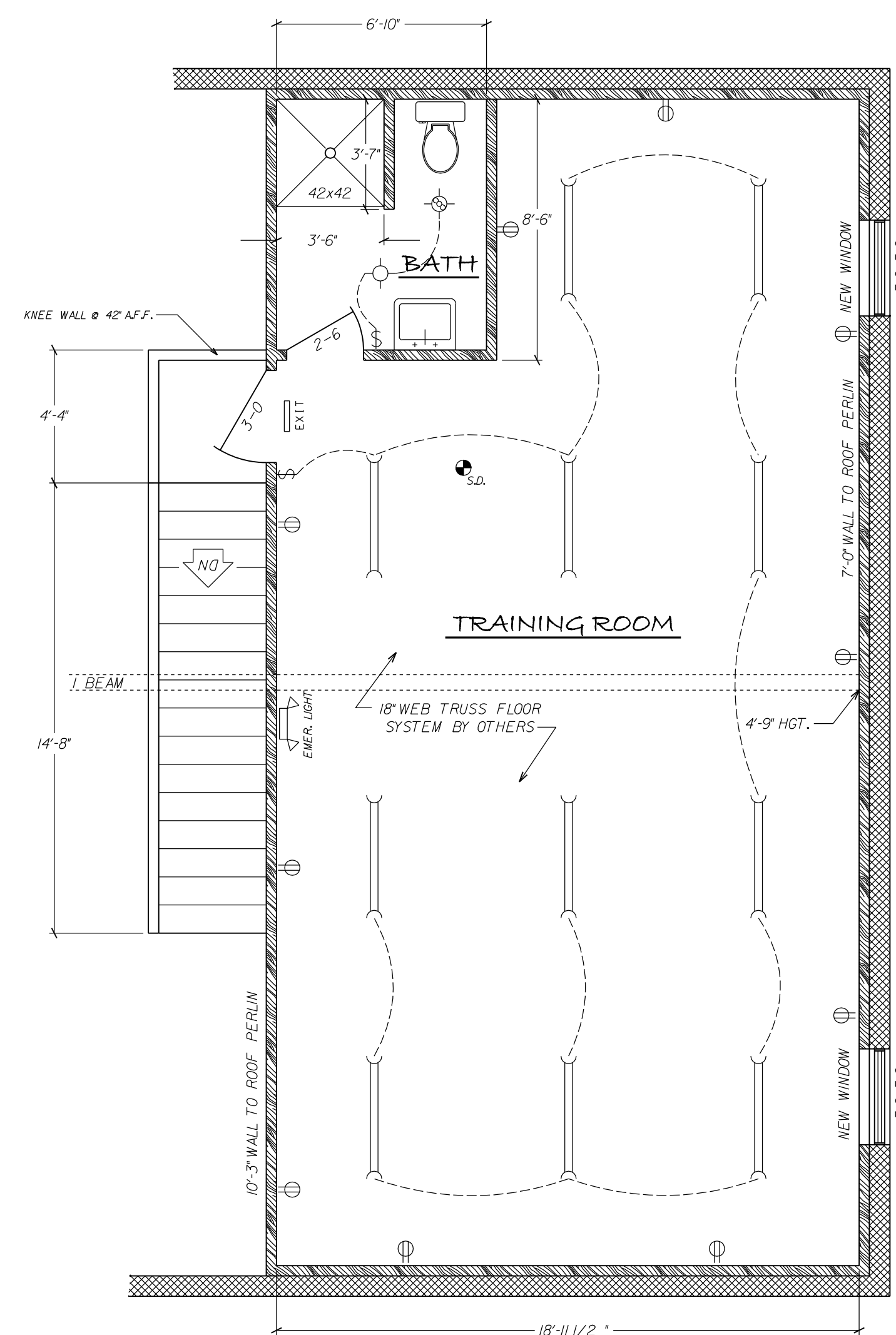
Date 12-07-20 Job No. KD101220

Sheet Title

LOWER FLOOR

Sheet No.

A-2



FIREHOUSE REMODEL

Scale 1/4"=1'-0"

Print Record

OCT. 12 2008 ORIG. ISSUE

Revisions

Date 12-07-20 **Job No.** KD101220

Sheet Title

UPPER FLOOR

Sheet No.

A-3